

FEATURES

- Most efficient CRI95 LED available in the market
- Click system to change lenses and range of frontrings
- LED's are positioned deep into the downlight for reduced glare



Conic 75 RND fix LV

Fixed

SPECIFICATIONS

Beam angle	20°/37°/55°
Color	White 9016 / Black 9005
Fixture material	Housing: Die cast aluminium / Lens: Polycarbonate
CCT	2700K / 3000K / 4000K / 1800-300K
CRI	CRI95 (2700K/ 3000K/ 4000K) & CRI93 (1800-3000K)
IK rate	IK03
IP rate	IP20
Operating temperature	-20°C / +45°C
Safety marks	EN60598
Colour consistency	MacAdam step 3
Warranty	5 years
Safety class	II
Energy class	These products contain a light source of energy efficiency class E (2700K/3000K/4000K)

This luminaire contains built-in LED lamps. There are no exchangeable parts inside the luminaire. EU 874/2012

¹ In applications with a flat roof (f.i. car showrooms) the temperatures may exceed 45°C. Please ask our sales office for a special driver.

COLOURS

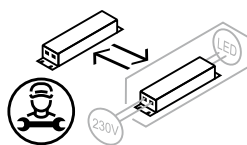
Available colours:



Matt white RAL 9016 (XX=MW)
Matt black RAL 9005 (XX=BL)

SPRINGS

Standard with CS springs (concrete/gyproc).
Also available as below with WS springs (gyproc/metal).



CRI95 VARIATIONS

Conic 75 RND fix LV 2700K CRI95 1200/1650Lm page 3

Conic 75 RND fix LV 3000K CRI95 1200/1650Lm page 4

Conic 75 RND fix LV 4000K CRI95 1250/1700Lm page 5

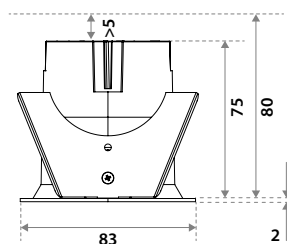
CRI93 VARIATIONS

Conic 75 RND fix LV 1800-3000K CRI93 1200Lm page 6

CHOOSE YOUR LV LUMEN OUTPUT

	mA	W	Lumen Output			Lumen / Watt			UGR			Driver types				
			2700K	3000K	4000K	2700K	3000K	4000K	3000K			No dim	Triac	Dali	Casambi	
									24°	37°	55°					
Special request	150	5,6	750	750	775	134	134	138	12.1	12.5	20.8	CC21W150-500	X		CC20W100-800	142047
Special request	200	7,6	975	975	1025	129	129	136	13.0	13.4	21.8	CC21W150-500	X		CC20W100-800	142047
Standard	250	9,6	1200	1200	1250	125	125	131	13.7	14.1	22.5	CC21W150-500	X		CC20W100-800	142047
Special request	300	11,6	1425	1425	1475	123	123	127	14.3	14.7	23.1	CC21W150-500	X		CC20W100-800	142047
Special request	350	13,7	1650	1650	1700	121	121	124	14.8	15.2	23.6	CC21W150-500	EC25CA-EIZHP		CC20W100-800	142047

DIMENSIONS



CUT SIZE



Using CS springs: Ø 75-77 mm.
Thickness ceiling 5-80 mm &
recess depth 80 mm.

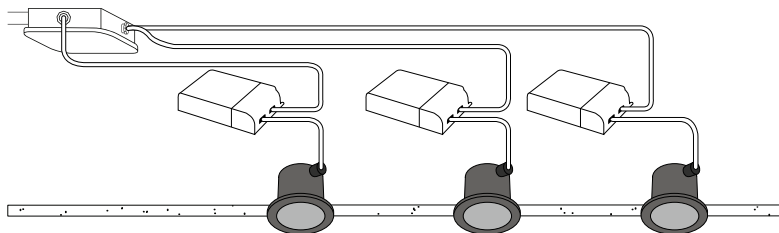


Using WS springs: Ø 75-77 mm.
Thickness ceiling 1-30 mm &
recess depth 80 mm.

CONIC 75 RND FIX LV

2700K CRI95 1200/1650LM

Downlight incl. PSU



ITEM SPECIFICATIONS

Description	Item code CS	WS	Input	W	Lm	Lm/W	CRI (typ.)	UGR	Pf	Ripple	Inrush current	B-16A Fuse
Conic 75 RND fix LV 1200Lm 2700K 20° No dim	CC4C03XX2F02	CC4C03XX6V02	220-240V AC/DC	9.6	1200	125	95	13.7	0.85	<3%	21A 180μS	50 pcs
Conic 75 RND fix LV 1650Lm 2700K 20° Triac	CC4C03XX2I02	CC4C03XX6Y02	220-240V AC/DC	13.7	1650	121	95	14.8	0.95	<9%	8.4A 544μS	85 pcs
Conic 75 RND fix LV 1200Lm 2700K 20° Dali	CC4C03XX2H02	CC4C03XX6X02	220-240V AC/DC	9.6	1200	125	95	13.7	0.94	<3%	7.5A 16μS	66 pcs
Conic 75 RND fix LV 1200Lm 2700K 20° Casambi	CC4C03XX2G02	CC4C03XX6W02	220-240V AC/DC	9.6	1200	125	95	13.7	0.95	<3%	5A 50μS	50 pcs
Conic 75 RND fix LV 1200Lm 2700K 37° No dim	CC4C03XX1G02	CC4C03XX1V02	220-240V AC/DC	9.6	1200	125	95	14.1	0.85	<3%	21A 180μS	50 pcs
Conic 75 RND fix LV 1650Lm 2700K 37° Triac	CC4C03XX1K02	CC4C03XX1Y02	220-240V AC/DC	13.7	1650	121	95	15.2	0.95	<9%	8.4A 544μS	85 pcs
Conic 75 RND fix LV 1200Lm 2700K 37° Dali	CC4C03XX1J02	CC4C03XX1X02	220-240V AC/DC	9.6	1200	125	95	14.1	0.94	<3%	7.5A 16μS	66 pcs
Conic 75 RND fix LV 1200Lm 2700K 37° Casambi	CC4C03XX1H02	CC4C03XX1W02	220-240V AC/DC	9.6	1200	125	95	14.1	0.95	<3%	5A 50μS	50 pcs
Conic 75 RND fix LV 1200Lm 2700K 55° No dim	CC4C03XXF02	CC4C03XXF602	220-240V AC/DC	9.6	1200	125	95	22.5	0.85	<3%	21A 180μS	50 pcs
Conic 75 RND fix LV 1650Lm 2700K 55° Triac	CC4C03XXF02	CC4C03XXF902	220-240V AC/DC	13.7	1650	121	95	23.6	0.95	<9%	8.4A 544μS	85 pcs
Conic 75 RND fix LV 1200Lm 2700K 55° Dali	CC4C03XXFR02	CC4C03XXF802	220-240V AC/DC	9.6	1200	125	95	22.5	0.94	<3%	7.5A 16μS	66 pcs
Conic 75 RND fix LV 1200Lm 2700K 55° Casambi	CC4C03XXFQ02	CC4C03XXF702	220-240V AC/DC	9.6	1200	125	95	22.5	0.95	<3%	5A 50μS	50 pcs

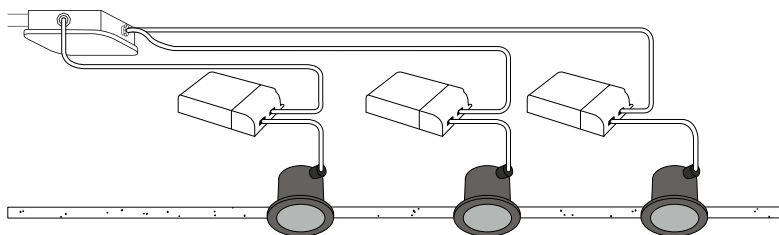
Description	Safety class	Energy class	Weight	Dimensions carton	Quantity per carton	Expected Lifetime			Reported Lifetime*		
						L70B10	L80B10	L90B10	L70B10	L80B10	L90B10
Conic 75 RND fix LV 2700K	II	E	410 gr	160x107x100 mm	18 pcs	621.000 hrs	372.000 hrs	150.000 hrs	>105.000 hrs	>105.000 hrs	105.000 hrs

All values are measured at 230V (+/- 7%). *Based on 19.000 hrs of LM80 testing at 1440 mA and a Tc85°C

CONIC 75 RND FIX LV

3000K CRI95 1200/1650LM

Downlight incl. PSU



ITEM SPECIFICATIONS

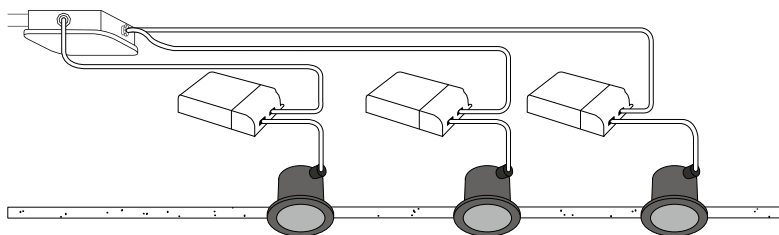
Description	Item code CS	WS	Input	W	Lm	Lm/W	CRI (typ.)	UGR	Pf	Ripple	Inrush current	B-16A Fuse
Conic 75 RND fix LV 1200Lm 3000K 20° No dim	CC4D03XX2F02	CC4D03XX6V02	220-240V AC/DC	9.6	1200	125	95	13.7	0.85	<3%	21A 180μS	50 pcs
Conic 75 RND fix LV 1650Lm 3000K 20° Triac	CC4D03XX2I02	CC4D03XX6Y02	220-240V AC/DC	13.7	1650	121	95	14.8	0.95	<9%	8.4A 544μS	85 pcs
Conic 75 RND fix LV 1200Lm 3000K 20° Dali	CC4D03XX2H02	CC4D03XX6X02	220-240V AC/DC	9.6	1200	125	95	13.7	0.94	<3%	7.5A 16μS	66 pcs
Conic 75 RND fix LV 1200Lm 3000K 20° Casambi	CC4D03XX2G02	CC4D03XX6W02	220-240V AC/DC	9.6	1200	125	95	13.7	0.95	<3%	5A 50μS	50 pcs
Conic 75 RND fix LV 1200Lm 3000K 37° No dim	CC4D03XX1G02	CC4D03XX1V02	220-240V AC/DC	9.6	1200	125	95	14.1	0.85	<3%	21A 180μS	50 pcs
Conic 75 RND fix LV 1650Lm 3000K 37° Triac	CC4D03XX1K02	CC4D03XX1Y02	220-240V AC/DC	13.7	1650	121	95	15.2	0.95	<9%	8.4A 544μS	85 pcs
Conic 75 RND fix LV 1200Lm 3000K 37° Dali	CC4D03XX1J02	CC4D03XX1X02	220-240V AC/DC	9.6	1200	125	95	14.1	0.94	<3%	7.5A 16μS	66 pcs
Conic 75 RND fix LV 1200Lm 3000K 37° Casambi	CC4D03XX1H02	CC4D03XX1W02	220-240V AC/DC	9.6	1200	125	95	14.1	0.95	<3%	5A 50μS	50 pcs
Conic 75 RND fix LV 1200Lm 3000K 55° No dim	CC4D03XXFP02	CC4D03XXF602	220-240V AC/DC	9.6	1200	125	95	22.5	0.85	<3%	21A 180μS	50 pcs
Conic 75 RND fix LV 1650Lm 3000K 55° Triac	CC4D03XXFS02	CC4D03XXF902	220-240V AC/DC	13.7	1650	121	95	23.6	0.95	<9%	8.4A 544μS	85 pcs
Conic 75 RND fix LV 1200Lm 3000K 55° Dali	CC4D03XXFR02	CC4D03XXF802	220-240V AC/DC	9.6	1200	125	95	22.5	0.94	<3%	7.5A 16μS	66 pcs
Conic 75 RND fix LV 1200Lm 3000K 55° Casambi	CC4D03XXFQ02	CC4D03XXF702	220-240V AC/DC	9.6	1200	125	95	22.5	0.95	<3%	5A 50μS	50 pcs

Description	Safety class	Energy class	Weight	Dimensions carton	Quantity per carton	Expected Lifetime			Reported Lifetime*		
						L70B10	L80B10	L90B10	L70B10	L80B10	L90B10
Conic 75 RND fix LV 3000K	II	E	410 gr	160x107x100 mm	18 pcs	621.000 hrs	372.000 hrs	150.000 hrs	>105.000 hrs	>105.000 hrs	105.000 hrs

All values are measured at 230V (+/- 7%). *Based on 19.000 hrs of LM80 testing at 1440 mA and a Tc85°C

CONIC 75 RND FIX LV

Downlight incl. PSU



4000K CRI95 1250/1700LM

ITEM SPECIFICATIONS

Description	Item code CS	WS	Input	W	Lm	Lm/W	CRI (typ.)	UGR	Pf	Ripple	Inrush current	B-16A Fuse
Conic 75 RND fix LV 1250Lm 4000K 20° No dim	CC4E03XX2F02	CC4E03XX6V02	220-240V AC/DC	9.6	1250	131	95	13.9	0.85	<3%	21A 180μS	50 pcs
Conic 75 RND fix LV 1700Lm 4000K 20° Triac	CC4E03XX2J02	CC4E03XX6Y02	220-240V AC/DC	13.7	1700	124	95	14.9	0.95	<9%	8.4A 544μS	85 pcs
Conic 75 RND fix LV 1250Lm 4000K 20° Dali	CC4E03XX2H02	CC4E03XX6X02	220-240V AC/DC	9.6	1250	131	95	13.9	0.94	<3%	7.5A 16μS	66 pcs
Conic 75 RND fix LV 1250Lm 4000K 20° Casambi	CC4E03XX2G02	CC4E03XX6W02	220-240V AC/DC	9.6	1250	131	95	13.9	0.95	<3%	5A 50μS	50 pcs
Conic 75 RND fix LV 1250Lm 4000K 37° No dim	CC4E03XX1G02	CC4E03XX1V02	220-240V AC/DC	9.6	1250	131	95	14.2	0.85	<3%	21A 180μS	50 pcs
Conic 75 RND fix LV 1700Lm 4000K 37° Triac	CC4E03XX1K02	CC4E03XX1Y02	220-240V AC/DC	13.7	1700	124	95	15.3	0.95	<9%	8.4A 544μS	85 pcs
Conic 75 RND fix LV 1250Lm 4000K 37° Dali	CC4E03XX1J02	CC4E03XX1X02	220-240V AC/DC	9.6	1250	131	95	14.2	0.94	<3%	7.5A 16μS	66 pcs
Conic 75 RND fix LV 1250Lm 4000K 37° Casambi	CC4E03XX1H02	CC4E03XX1W02	220-240V AC/DC	9.6	1250	131	95	14.2	0.95	<3%	5A 50μS	50 pcs
Conic 75 RND fix LV 1250Lm 4000K 55° No dim	CC4E03XXFP02	CC4E03XXF602	220-240V AC/DC	9.6	1250	131	95	22.6	0.85	<3%	21A 180μS	50 pcs
Conic 75 RND fix LV 1700Lm 4000K 55° Triac	CC4E03XXFS02	CC4E03XXF902	220-240V AC/DC	13.7	1700	124	95	23.7	0.95	<9%	8.4A 544μS	85 pcs
Conic 75 RND fix LV 1250Lm 4000K 55° Dali	CC4E03XXFR02	CC4E03XXF802	220-240V AC/DC	9.6	1250	131	95	22.6	0.94	<3%	7.5A 16μS	66 pcs
Conic 75 RND fix LV 1250Lm 4000K 55° Casambi	CC4E03XXFQ02	CC4E03XXF702	220-240V AC/DC	9.6	1250	131	95	22.6	0.95	<3%	5A 50μS	50 pcs

Description	Safety class	Energy class	Weight	Dimensions carton	Quantity per carton	Expected Lifetime			Reported Lifetime*		
						L70B10	L80B10	L90B10	L70B10	L80B10	L90B10
Conic 75 RND fix LV 4000K	II	E	410 gr	160x107x100 mm	18 pcs	621.000 hrs	372.000 hrs	150.000 hrs	>105.000 hrs	>105.000 hrs	105.000 hrs

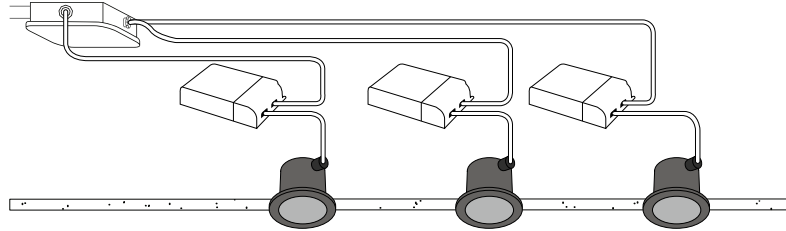
All values are measured at 230V (+/- 7%). *Based on 19.000 hrs of LM80 testing at 1440 mA and a Tc85°C

CONIC 75 RND FIX LV

Downlight incl. PSU



1800-3000K CRI95 1200LM



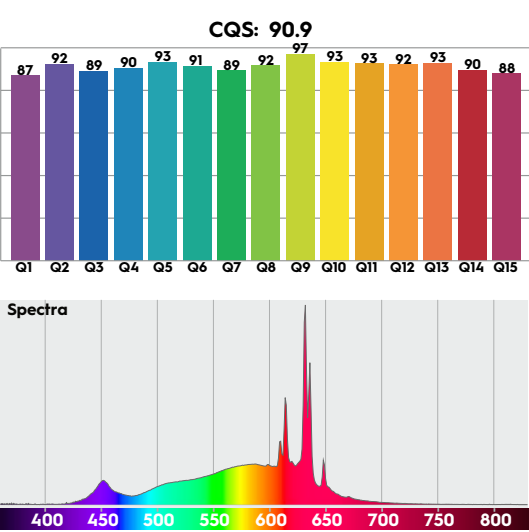
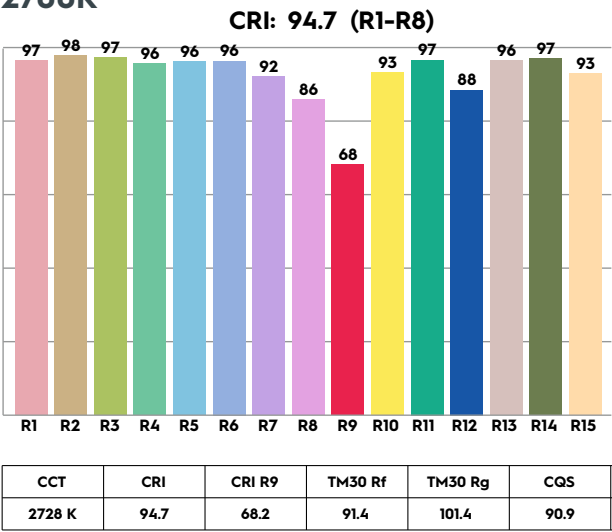
ITEM SPECIFICATIONS

Description	Item code CS	WS	Input	W	Lm	Lm/W	CRI (typ.)	UGR	Pf	Ripple	Inrush current	B-16A Fuse
Conic 75 RND fix LV 1200Lm 1800-3000K 20° Triac	CC4F03XX2J02	CC4F03XX6Y02	220-240V AC/DC	14.1	1200	85	93	13.7	0.95	<9%	8.4A 544μS	85 pcs
Conic 75 RND fix LV 1200Lm 1800-3000K 20° Dali	CC4F03XX2H02	CC4F03XX6X02	220-240V AC/DC	14.1	1200	85	93	13.7	0.94	<3%	7.5A 16μS	66 pcs
Conic 75 RND fix LV 1200Lm 1800-3000K 20° Casambi	CC4F03XX2G02	CC4F03XX6W02	220-240V AC/DC	14.1	1200	85	93	13.7	0.95	<3%	5A 50μS	50 pcs
Conic 75 RND fix LV 1200Lm 1800-3000K 37° Triac	CC4F03XX1K02	CC4F03XX1Y02	220-240V AC/DC	14.1	1200	85	93	14.1	0.95	<9%	8.4A 544μS	85 pcs
Conic 75 RND fix LV 1200Lm 1800-3000K 37° Dali	CC4F03XX1J02	CC4F03XX1X02	220-240V AC/DC	14.1	1200	85	93	14.1	0.94	<3%	7.5A 16μS	66 pcs
Conic 75 RND fix LV 1200Lm 1800-3000K 37° Casambi	CC4F03XX1H02	CC4F03XX1W02	220-240V AC/DC	14.1	1200	85	93	14.1	0.95	<3%	5A 50μS	50 pcs
Conic 75 RND fix LV 1200Lm 1800-3000K 55° Triac	CC4F03XXFS02	CC4F03XXF902	220-240V AC/DC	14.1	1200	85	93	22.5	0.95	<9%	8.4A 544μS	85 pcs
Conic 75 RND fix LV 1200Lm 1800-3000K 55° Dali	CC4F03XXFR02	CC4F03XXF802	220-240V AC/DC	14.1	1200	85	93	22.5	0.94	<3%	7.5A 16μS	66 pcs
Conic 75 RND fix LV 1200Lm 1800-3000K 55° Casambi	CC4F03XXFQ02	CC4F03XXF702	220-240V AC/DC	14.1	1200	85	93	22.5	0.95	<3%	5A 50μS	50 pcs

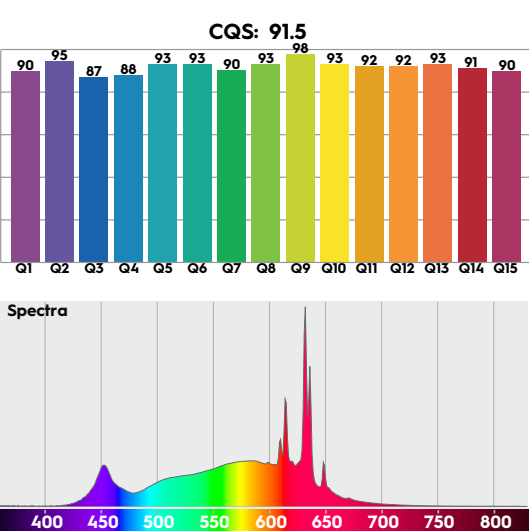
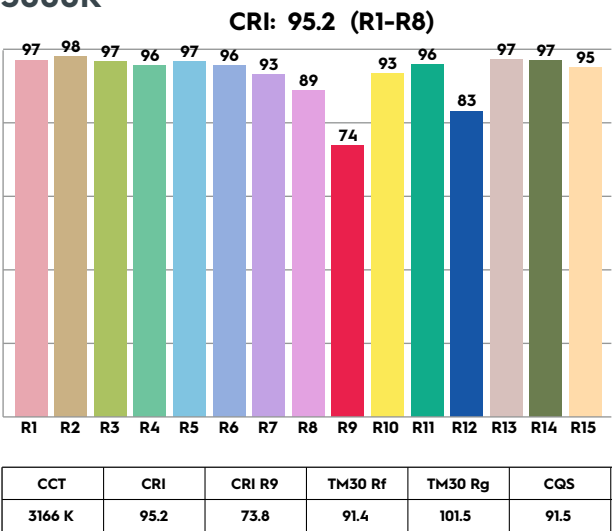
Description	Safety class	Energy class	Weight	Dimensions carton	Quantity per carton	Expected Lifetime			Reported Lifetime*		
						L70B10	L80B10	L90B10	L70B10	L80B10	L90B10
Conic 75 RND fix LV 1800-3000K	II	E	410 gr	160x107x100 mm	18 pcs	621.000 hrs	372.000 hrs	150.000 hrs	>105.000 hrs	>105.000 hrs	105.000 hrs

All values are measured at 230V (+/- 7%). *Based on 19.000 hrs of LM80 testing at 1440 mA and a Tc85°C

2700K



3000K



4000K

